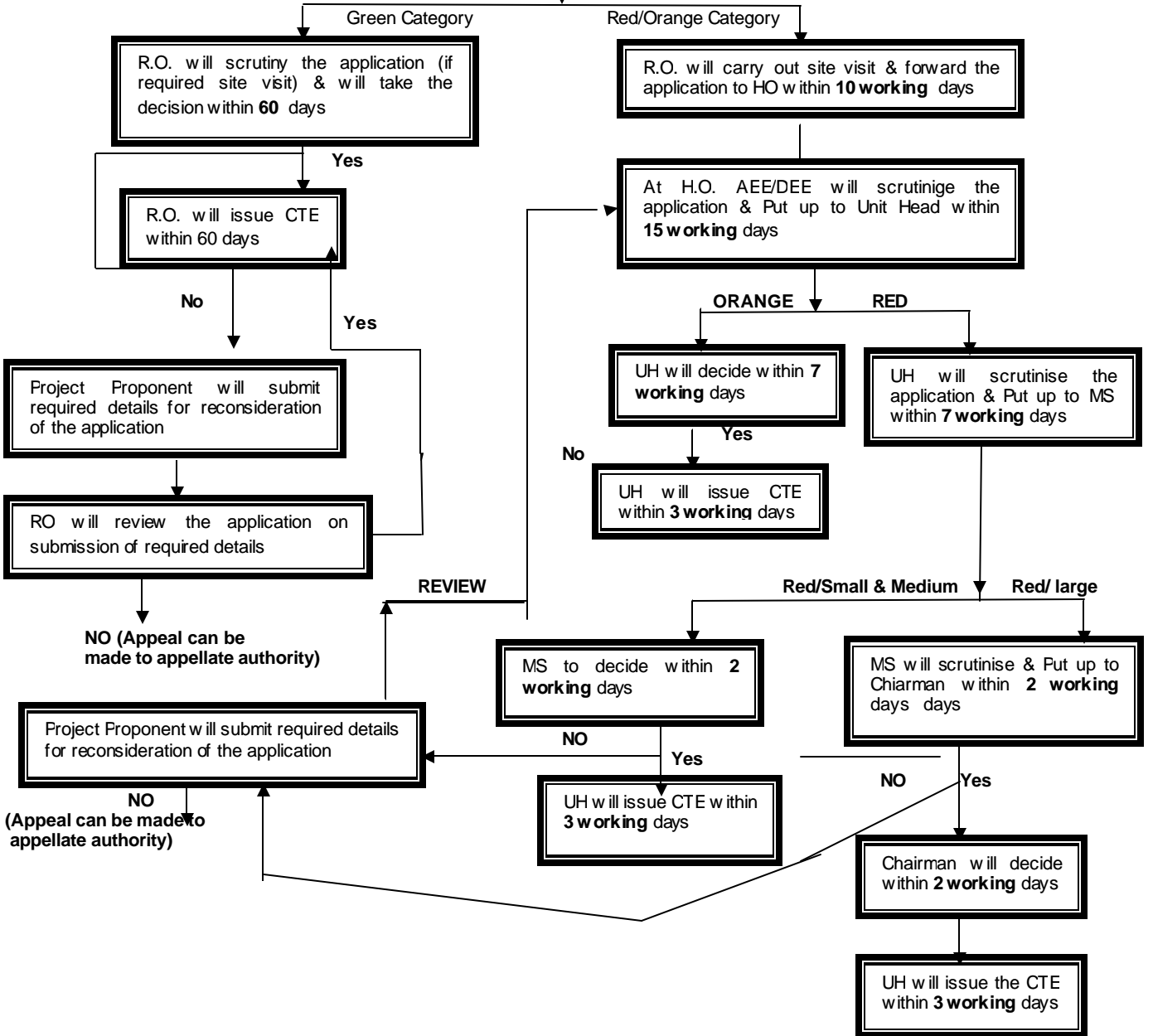




CTE

Application for Consent To Eastablish (CTE) will be submitted at RO/ HO(for vibrant projects) w ith all requisite details (As per Check List) and fees



Abbreviations

CTE Consent to Estabiles
 RO Regional Office
 HO Head Office
 UH Unit Head
 MS Member Secretary

Size of Units

Small - Up to 5 crores
 Medium - 5 to10 crores
 Large - Above 10 crores

Categories

As identified by CPCB, which is available on website www.cpcb.gov.in with hyperlinc in GPCB's website